



NTO SHIPPING
GmbH & Co. KG

MV "Norwind"



NTO Shipping GmbH & Co. KG
Hafenstraße 15
26789 Leer – Germany

Phone + 49 (0) 491 928 15 – 5
Fax + 49 (0) 491 928 15 – 99
info@ntoship.com

MV "Norwind"

General

Type	General cargo ship
Built	1999, Trogir Hrvatska Croatia yard no. 241,
Class	BV I +HULL+MACH General Cargo Ship Unrestricted Navigation, Heavy Cargo; ICE CLASS IB; MON-Shaft; SDS
IMO no.	9171371
Flag	Antigua and Barbuda
Port of registry	St. John's
Call sign	V2DR8

Dimensions

Length o.a.	108,50 m
Breadth	18,60 m
Draught	8.33 m
Air draft	33,45 m (basis full ballast)
Gross tonnage / Net tonnage	6354 / 2988
DWAT	abt. 9861 t

Machinery/ Speed

Main engine	WÄRTSILÄ 6L32, 2760 kW
Generator(s)	2 Auxiliaries engine 380 kW
	Auxiliary engine 80 kW
	Shaft Generator 616 kW
Fuel specification	MGO, HFO
Bow thrusters	Yes
Speed	abt. 10,5 kn
Capacity of tanks	Ballast water abt. 3702 cbm
	MGO : abt. 32 cbm
	HFO: abt. 240 cbm
	Freshwater: abt. 70 cbm

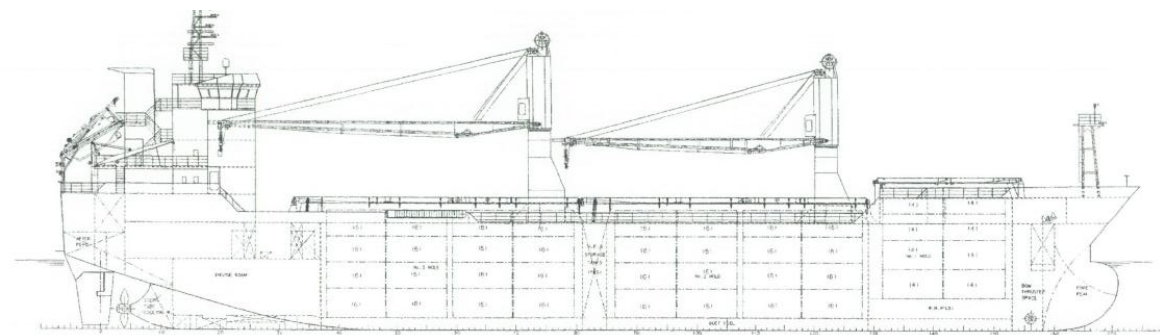
MV "Norwind"

Hold/ Hatches

One hatch	12.70 m x 10.40 m
Two hatch	25.40 m x 15.00 m
Third hatch	25.40 m x 15.00 m
One hold	14.40 m x 10.40 m x 11.34 m
Two hold	26.40 m x 15.00 m x 11.10 m
Third hold	26.40 m x 15.00 m x 11.10 m
Strength on main deck	1.75 t/sqm
Strength on tank top	11 t/sqm
Container capacity	208 TEU on hold 95 TEU on deck
Reefer plugs	n/a
Hatch cover type	Mac Gregor
Grain	abt. 10652 cbm

Cargo Features

Hold ventilation	Yes, 6 per/hour (empty hold)
Dangerous goods	Yes



Details about, given in good all faith but not guaranteed. Particulars believed to be correct, but without guarantee.